



Active CAN Terminator





Technical Data

Construction	Plastic housing (PA66 GF30) with metal housing bracket
Connector	4 pin Deutsch connector type DT04-4P
Housing Dimensions	40 x 30 x 30 mm
Weight	52 g
Ambient Temperature	– 40°C to 85°C
Protection Class	IP67
Operating Voltage U_B	9 - 30 V DC Protection against reverse polarity and electrical transients.
Current Consumption	30 mA
Recommended Protection	1 A

Interfaces

CAN-bus

According to ISO 11898-2	High-speed
According to CAN 2.0A	11-bit standard address identifier
According to CAN 2.0B	29-bit extended address identifier
Baud Rate	10-kBit/s – 1000-kBit/s

Technical Examination

EMV	In progress
E1 Approval Number	In progress



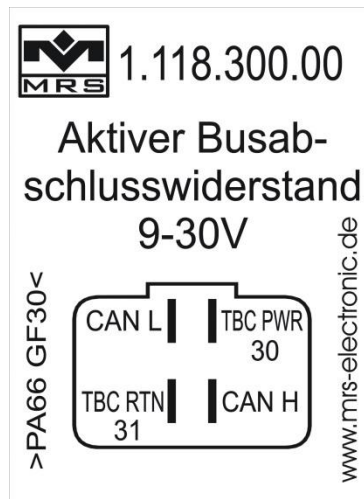
Usage

With this module, the CAN bus can be terminated independently of the cable length of the bus and the connected control devices. Programming of the baud rate is not necessary and the use of this module eliminates the need to connect the two terminating resistors.

Connection Assignment DT04-4P

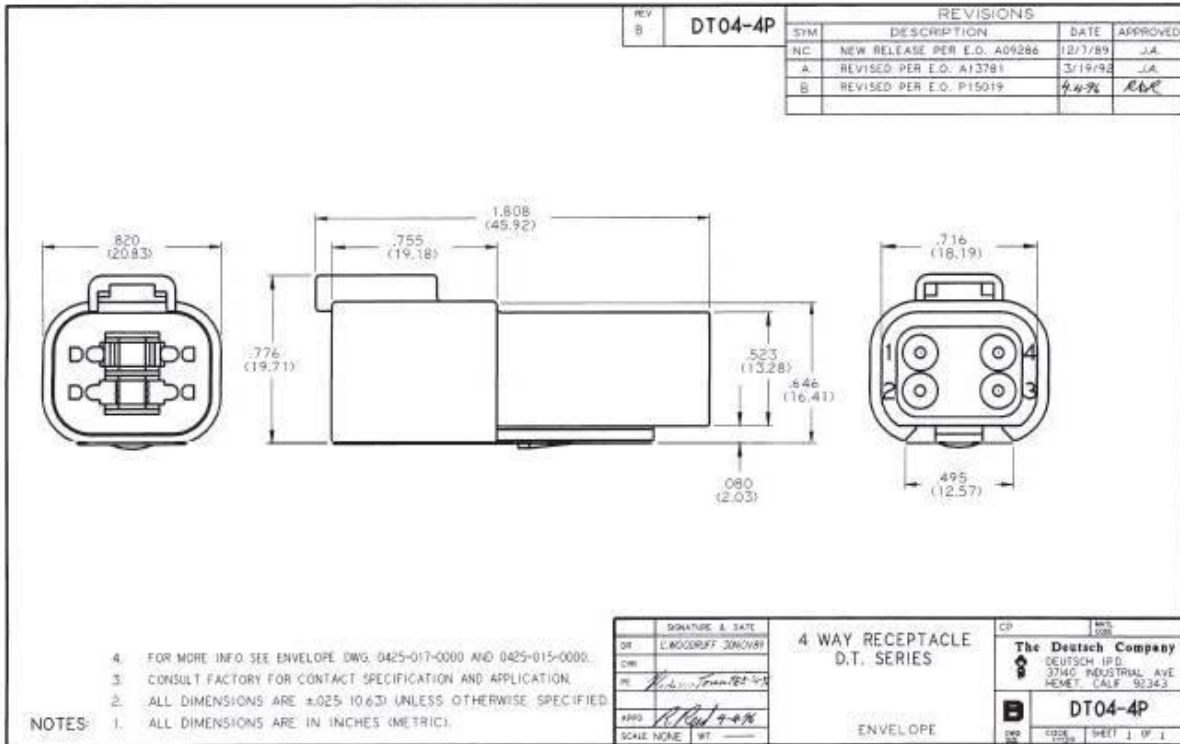
Pin	Signal Program	Pin Description
1	TBC PWR; pin30	Supply voltage 9-30V
2	CAN H	CAN-high
3	TBC RTN; pin 31/GND	Ground
4	CAN L	CAN-low

Connection Assignment





Original Drawing Deutsch Connector 4 Pins (DT04-4P)



Order Information

Designation	Execution	Housing	Order Number
Active CAN Terminator	CAN-high/CAN-low	G2	1.118.300.00E

Accessories

Designation	Order Number
Connector Deutsch DT06-4S (4 pins)	104494
Holding Key for DT06-4S	107960
Crimp Contact for DT06-4S	109804