



CAN PCB



for Joystick



Technical data

Construction	CAN Open Controller for joystick housings
Connector	Molex Milli-Grid 14/18pol
Housing Dimensions	60 x 60 x 30 mm/with connector: 60 x 80 x 30 mm
Ambient Temperature	- 40°C to 85°C
Storage Temperature	- 40°C to 85°C
Protection Class	N/A
Operating Voltage U_B	9 - 30V DC

Possible Inputs and Outputs

Digital Inputs	14
Analog Inputs	10
Digital Outputs	4

Technical Data Inputs and Outputs

Characteristics of Digital Inputs

Input Voltage	0 V...5 V DC
---------------	--------------

Characteristics of Digital Outputs

Load Current	2.5 A
Output Voltage	0 V ... U_B

Characteristics of Analog Inputs

Input Voltage	0 V...5 V DC
Resolution	12-bit ADC

Connection Assignment

Pin	Signal	Pin description
X101.1	ANA8	Analog input
X101.2	5V DC	5V supply for sensors
X101.3	ANA9	Analog input
X101.4	GND	GND
X101.5	DIN0	Digital input
X101.6	DIN1	Digital input
X101.7	DIN2	Digital input
X101.8	DIN3	Digital input
X101.9	DIN4	Digital input
X101.10	DIN5	Digital input
X101.11	DIN6	Digital input
X101.12	DIN7	Digital input

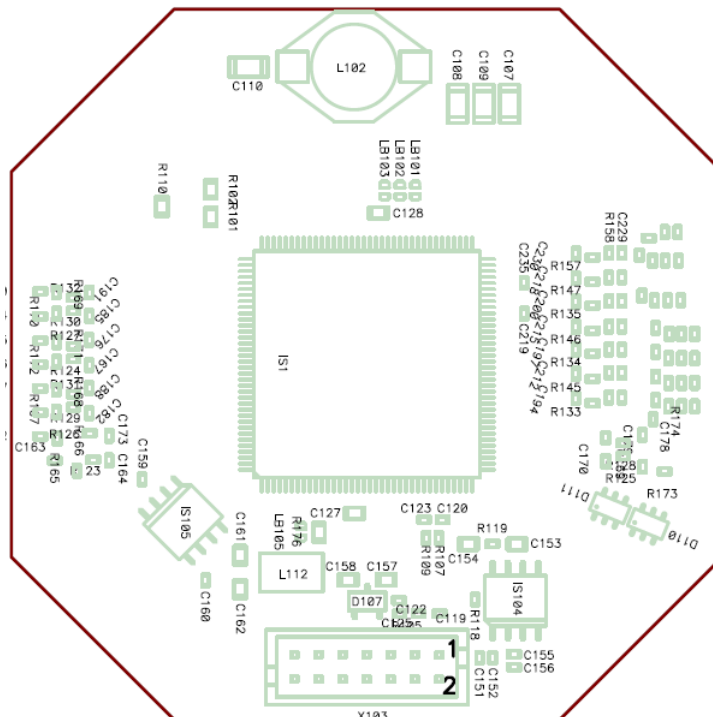
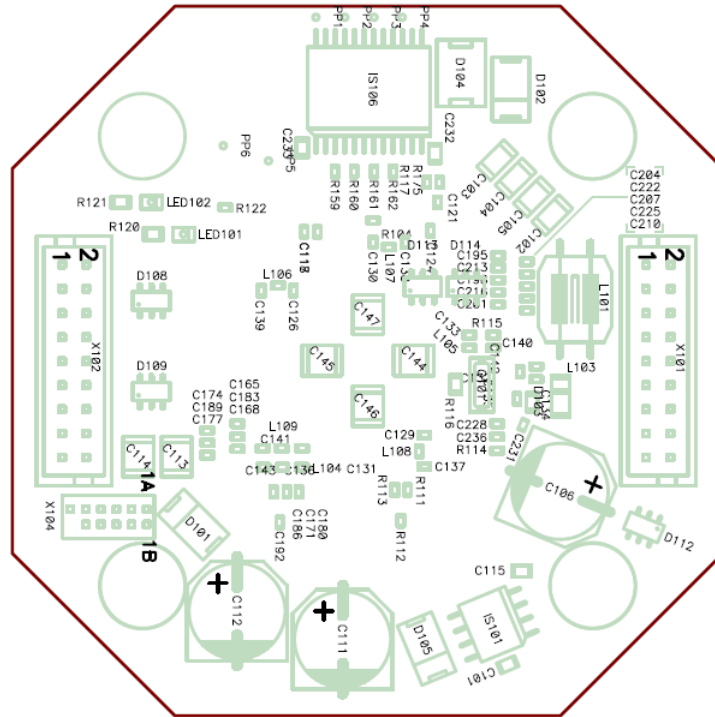
Continued on next page



X101.13	DIN8	Digital input
X101.14	DIN9	Digital input
X101.15	DIN10	Digital input
X101.16	DIN11	Digital input
X101.17	DIN12	Digital input
X101.18	DIN13	Digital input
X102.1	ANA0	Analog input
X102.2	5V DC	5V supply for sensors
X102.3	ANA1	Analog input
X102.4	GND	GND
X102.5	ANA2	Analog input
X102.6	5V	5V supply for sensors
X102.7	ANA3	Analog input
X102.8	GND	GND
X102.9	ANA4	Analog input
X102.10	5V	5V supply for sensors
X102.11	ANA5	Analog input
X102.12	GND	GND
X102.13	ANA6	Analog input
X102.14	5V	5V supply for sensors
X102.15	ANA7	Analog input
X102.16	GND	GND
X102.17	NC	n.c.
X102.18	NC	n.c.
X103.1	MGND	GND
X103.2	UB/KL30	VCC supply
X103.3	ADDR1	Address input
X103.4	ADDR2	Address input
X103.5	RS_BR_CAN	
X103.6	CAN-H	CAN-Bus
X103.7	CAN-L	CAN-Bus
X103.8	OUT3	Digital output
X103.9	5V	5V supply for sensors
X103.10	OUT2	Digital output
X103.11	MC/TxD	
X103.12	OUT1	Digital output
X103.13	MC/RxD	n.c.
X103.14	OUT0	Digital output



Drawing



Datasheet
CAN PCB for Joystick

MRS Electronic, Inc.®
2149 Winner Circle
Dayton, OH 45404
(937) 522-0800
www.mrs-electronic.com



Order Information

Designation	Order Number
CAN PCB for Joystick	1.055.300.00